

# Whadjuk Trail Network

[www.whadjukwalkingtrails.org.au](http://www.whadjukwalkingtrails.org.au)

## Karda Bidi Accessible alternate routes









# Whadjuk Trail Network

[www.whadjukwalkingtrails.org.au](http://www.whadjukwalkingtrails.org.au)

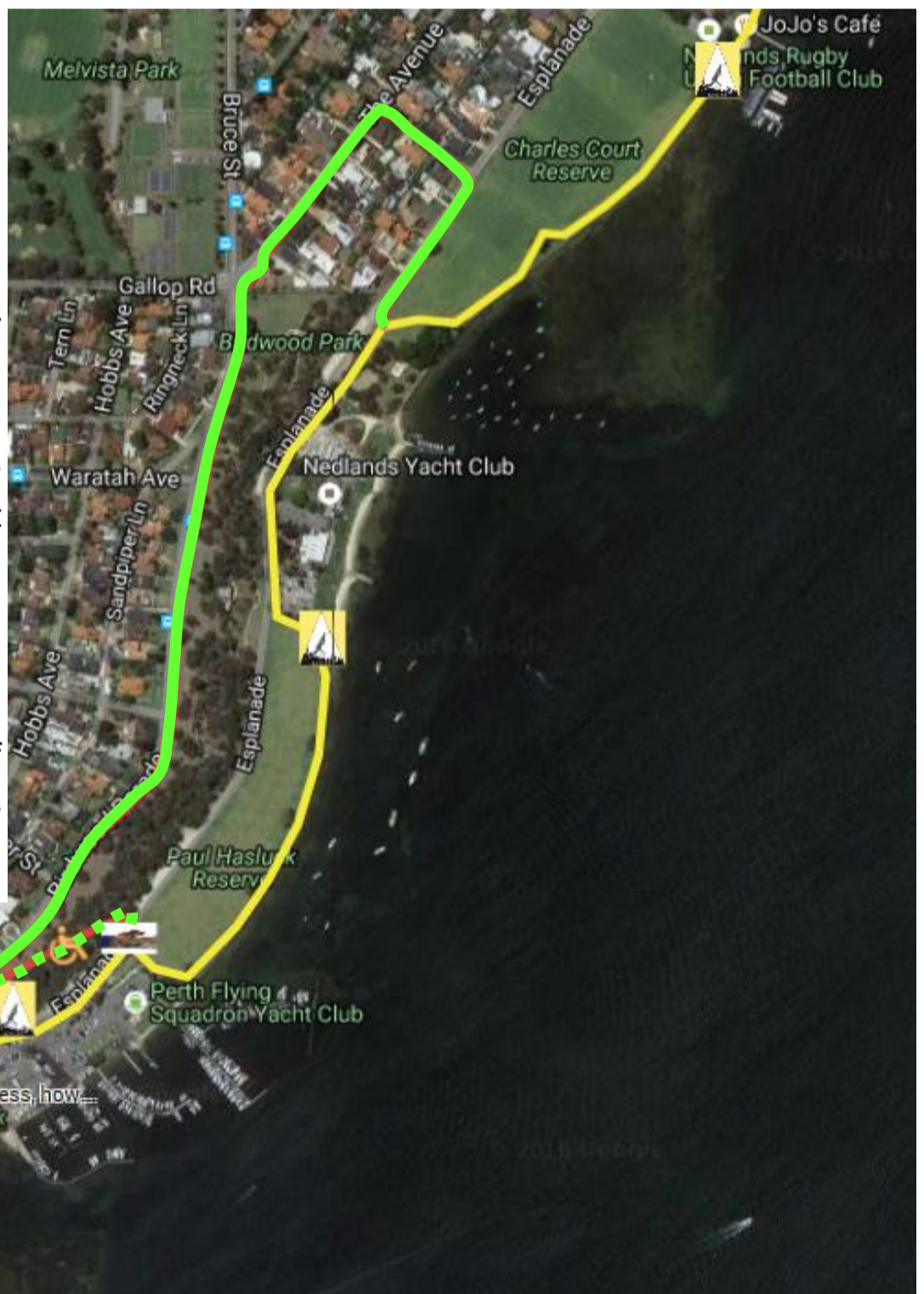
## Wheelchair accessibility on Karda Bidi

-  Karda Bidi
-  Alternate Wheelchair accessible route
-  Sealed sectors to access Birdwood Parade
-  Steep steps

### Section 1 and 2 CHARLES COURT RESERVE TO JUTLAND PARADE

The Karda Bidi passes Charles Court Reserve and then Tawarri. Three options offer alternate access to Jutland Parade, the first up Bessell Avenue near Charles Court Reserve. The other 2 options include sealed short narrow access pathways that are a little steeper than ideal. The Karda Bidi is fully accessible as far as the steep steps after the Tawarri remnant bushland sector where the wonderful riverside path offers a strong presence of varied birdlife.

To include this section and avoid the set of steep steps, one needs to double back and select one of the alternate sealed pathways shown as green dots to continue on Jutland Parade.





# Whadjuk Trail Network

[www.whadjukwalkingtrails.org.au](http://www.whadjukwalkingtrails.org.au)

## Section 3 POINT RESOLUTION

Access to Point Resolution is across grass, and includes a small steep section with steps which can easily be avoided. The dotted section shown is across fairly level grass which easily re-connects to the alternate route on Jutland Parade a little further south. The alternate route follows the perimeter of the reserve and re-joins the Karak Bidi at Bishop Road Reserve.

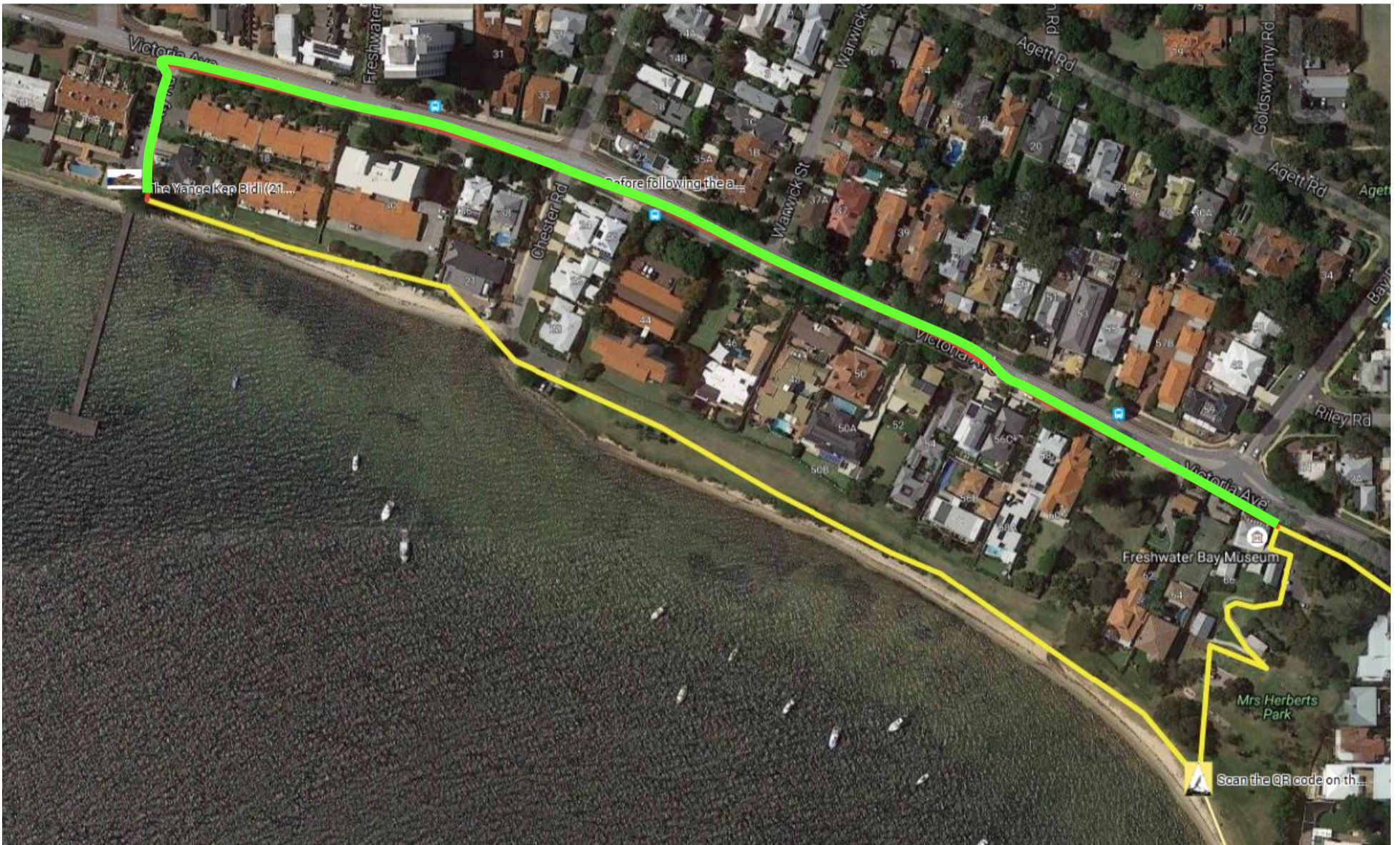
The connection between Point Resolution and Bishop Road Reserve is along the riverbanks.





# Whadjuk Trail Network

[www.whadjukwalkingtrails.org.au](http://www.whadjukwalkingtrails.org.au)



## Section 4 MRS HERBERTS PARK TO JETTY ROAD

Follow the accessible pathway to the museum and lower sector of Mrs Herbert's Park and enjoy the historic boatshed!

The Karda Bidi continues from Mrs Herbert's Park to the end of the trail along the river sand and the alternate route along Victoria Avenue offers multiple access points where the jetty can be accessed and views enjoyed.

